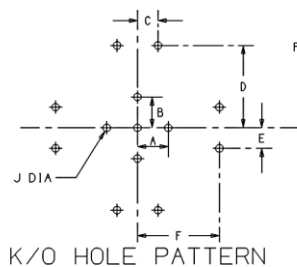


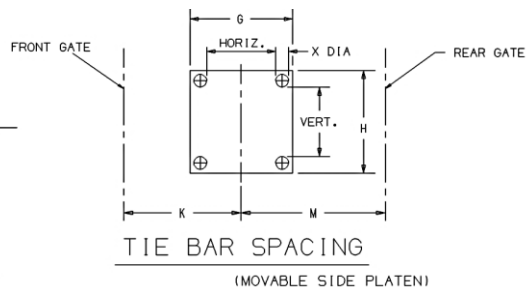
PRESS #	PRESS MAKE	PRESS MODEL	RJG READY	TACT CNTRL	PRESS SIZE	SHOT SIZE	A	B	C	D	E	F	G	H	K	M	X DIA (in.)	TIE BAR		MOLD		OPEN DAY-LIGHT	CLAMP STROKE	EJECT STROKE	SCREW SIZE (mm)	INTENS. RATIO	MAX PLASTIC PRESSURE (PSI)
																		HORIZ.	VERT.	MIN.	MAX.						
1	NISSEI NEX 1000	9E-AA		X	89 T	2.0 oz	3.5	3.5	N/A	N/A	N/A	N/A	21.5	21.5	18.0	19.7	2.36	15.2	15.2	9.45"	△	27.0"	9.8"	3.0"	26	1:1	38,435
2	NISSEI NEX 1000	5E-A		X	89 T	1.2 oz	3.5	3.5	N/A	N/A	N/A	N/A	21.5	21.5	18.0	19.7	2.36	15.2	15.2	9.45"	△	27.0"	9.8"	3.0"	22	1:1	36,970
3	NISSEI NEX 1000	5E-A		X	89 T	1.2 oz	3.5	3.5	N/A	N/A	N/A	N/A	21.5	21.5	18.0	19.7	2.36	15.2	15.2	9.45"	△	27.0"	9.8"	3.0"	22	1:1	36,970
4	NISSEI FN 2000	18A	X		123 T	4.7 oz	3.5	3.5	N/A	N/A	N/A	N/A	23.9	23.9	22.00	24.0	2.36	16.5	16.5	7.9"	△	28.3"	20.4"	3.3"	36	16.1:1	32,280
5b	NISSEI FNX 110	18A-AA	X	X	123 T	3.8 oz	3.5	3.5	N/A	N/A	N/A	N/A	25.5	25.5	19.7	22.5	2.75	18.1	18.1	7.9"	△	28.3"	20.5"	3.3"	32	19.2:1	38,400
6b	NISSEI FNX 110	18A-A	X	X	123 T	4.9 oz	3.5	3.5	N/A	N/A	N/A	N/A	25.5	25.5	19.7	22.5	2.75	18.1	18.1	7.9"	△	28.3"	20.5"	3.3"	36	16.14:1	32,280
7b	NISSEI FNX 110	18A-AA	X	X	123 T	3.8 oz	3.5	3.5	N/A	N/A	N/A	N/A	25.5	25.5	19.7	22.5	2.75	18.1	18.1	7.9"	△	28.3"	20.5"	3.3"	32	19.2:1	38,400
8	NISSEI FN 1000	5A	X		89 T	1.2 oz	3.5	3.5	N/A	N/A	N/A	N/A	21.5	21.5	21.3	19.7	2.20	15.2	15.2	7.9"	△	26.4"	18.5"	3.0"	22	18.6:1	37,122
9	NISSEI FN 1000	5A	X		89 T	1.2 oz	3.5	3.5	N/A	N/A	N/A	N/A	21.5	21.5	21.3	19.7	2.20	15.2	15.2	7.9"	△	26.4"	18.5"	3.0"	22	18.6:1	37,122
10	NISSEI FN 1000	5A			89 T	1.6 oz	3.5	3.5	N/A	N/A	N/A	N/A	21.5	21.5	21.3	19.7	2.20	15.2	15.2	7.9"	△	26.4"	18.5"	3.0"	26	14.7:1	29,442
11	NISSEI FN 1000	12A	X		89 T	3.4 oz	3.5	3.5	N/A	N/A	N/A	N/A	21.5	21.5	21.3	19.7	2.20	15.2	15.2	7.9"	△	26.4"	18.5"	3.0"	32	16.4:1	32,850
12	NISSEI FN 1000	12A	X		89 T	3.4 oz	3.5	3.5	N/A	N/A	N/A	N/A	21.5	21.5	21.3	19.7	2.20	15.2	15.2	7.9"	△	26.4"	18.5"	3.0"	32	16.4:1	32,850
13	NISSEI FN 3000	25A	X		154 T	8.5 oz	3.5	3.5	2.0	8.0	2.0	8.0	27.6	27.6	25.2	23.4	2.99	18.9	18.9	9.8"	△	33.5"	23.6"	3.5"	45	12.5:1	25,170
14	NISSEI FN 3000	25A	X		154 T	6.7 oz	3.5	3.5	2.0	8.0	2.0	8.0	27.6	27.6	25.2	23.4	2.99	18.9	18.9	9.8"	△	33.5"	23.6"	3.5"	40	15.9:1	31,850
15b	NISSEI FNX 110	18A-A	X	X	123 T	4.9oz	3.5	3.5	N/A	N/A	N/A	N/A	25.5	25.5	19.7	22.5	2.75	18.1	18.1	7.9"	△	28.3"	20.5"	3.3"	36	16.14:1	32,280
15c	NISSEI FN 110A	12A-A***	X	X	123 T	3.4 oz	3.5	3.5	N/A	N/A	N/A	N/A	25.5	25.5	23.6	23	2.75	18.1	18.1	7.9"	△	28.3	2.5	3.3"	32	16.4:1	32,850
16	NISSEI FN 80	5A-BB**		X	89 T	1.9 oz	3.5	3.5	N/A	N/A	N/A	N/A	21.5	21.5	21.3	19.7	2.20	15.2	15.2	7.9"	△	26.4"	18.5"	3.0"	28	13:1	26,100
17	NISSEI NEX 50	5E-A		X	55 T	1.2 oz	3.5	3.5	N/A	N/A	N/A	N/A	19.9	19.9	20.9	20.6	1.97	14.2	14.2	6.7"	△	24"	9.8"	2.8"	22	1:1	36,970
18B	NISSEI FN 80	12A-AA***	X	X	89 T	2.6oz	3.5	3.5	N/A	N/A	N/A	N/A	22.8	22.8	17.3	18.7	1.97	16.5	16.5	7.9"	△	26.4"	18.5"	3.0"	28	19.2:1	38,400
19	NISSEI NEX 80	12A-AA***		X	89T	2.6oz	3.5	3.5	N/A	N/A	N/A	N/A	22.8	22.8	22	22	TBD	16.5	16.5	7.9"	△	27"	11.8"	2.98"	28	1:1	38,400
20B	NISSEI FN 80	12A-A***	X	X	89 T	3.4oz	3.5	3.5	N/A	N/A	N/A	N/A	22.8	22.8	17.3	18.7	1.97	16.5	16.5	7.9"	△	26.4"	18.5"	3.0"	32	16.4:1	32,850
21B	NISSEI NEX 50	5E-A		X	55 T	1.2 oz	3.5	3.5	N/A	N/A	N/A	N/A	19.9	19.9	20.3	20.0	1.97	13.0	13.0	6.7"	△	24"	9.8"	2.8"	22	1:1	36,970
22	NISSEI FN 220	50A*	X	X	237 T	16.9 oz	3.5	3.5	2.0	8.0	2.0	8.0	33.5	33.5	22.8	27.8	3.62	23.2	23.2	11.4"	△	41.3"	29.9"	4.76"	56	11.4:1	22,900
22B	NISSEI FN 110	12A-A***	X	X	123 T	3.4 oz	3.5	3.5	N/A	N/A	N/A	N/A	22.8	22.8	17.3	18.7	2.75	18.1	18.1	7.9"	△	26.4"	18.5"	3.0"	32	16.4:1	32,850
23	NISSEI FN 220	50A-A*	X	X	237 T	13.5oz	3.5	3.5	2.0	8.0	2.0	8.0	33.5	33.5	22.8	27.8	3.62	23.2	23.2	11.4"	△	41.3"	29.9"	4.76"	50	14.4:1	28,730
24	NISSEI FN 80	5A-B**	X	X	89 T	1.6 oz	3.5	3.5	N/A	N/A	N/A	N/A	21.5	21.5	21.3	19.7	2.20	15.2	15.2	7.9"	△	26.4"	18.5"	3.0"	26	15.1:1	30,305
25	NISSEI FN 4000	50A-B	X		197 T	13.6 oz	3.5	3.5	2.0	8.0	2.0	8.0	30.3	30.3	26.7	26.2	3.35	20.9	20.9	9.8"	△	37.4"	27.6"	4.30"	50	14.37:1	28,730
26	NISSEI FN 110	18A-A	X	X	123 T	4.9oz	3.5	3.5	N/A	N/A	N/A	N/A	25.5	25.5	19.7	22.5	2.75	18.1	18.1	7.9"	△	28.3"	20.5"	3.3"	36	16.14:1	32,280
27	NISSEI FN 80	12A-A***	X	X	89 T	3.4oz	3.5	3.5	N/A	N/A	N/A	N/A	22.8	22.8	17.3	18.7	2.36	16.5	16.5	7.9"	△	26.4"	18.5"	3.0"	32	16.4:1	32,850
28	NISSEI FN 80	12A-A***	X	X	89 T	3.4oz	3.5	3.5	N/A	N/A	N/A	N/A	22.8	22.8	17.3	18.7	2.36	16.5	16.5	7.9"	△	26.4"	18.5"	3.0"	32	16.4:1	32,850

* 50A injection unit with 50E barrel and screw
 **5A injection unit with 5E barrel
 ***12A injection unit with 12E barrel and screw

Note: r -MOLD HEIGHT + TOTAL MOLD OPENING REQ'D CANNOT EXCEED MAXIMUM OPEN DAYLIGHT



PLATEN.CXD 11/07/2003 L.1



NOTE: SHOT SIZE CANNOT EXCEED SHOT WEIGHT -80%

MATRIX TOOL, INC.	
INJECTION MOLDING DIVISION	
PLATEN CHART	
LAST UPDATED ON: 7/24/2017	CREATED BY JRB
	UPDATED BY SMA
APPROVAL: D.M. DATE: 9/26/2014	
P:\Platen Chart\Platen Chart 2017.xlsx	