



# MATRIX TOOL INC.

ADVANCED MOLDING AND TOOLING

4976 Franklin Road

P.O. Box 920

Fairview, PA 16415

Made in the USA

814 · 474 · 5531

info@matrixtoolinc.com

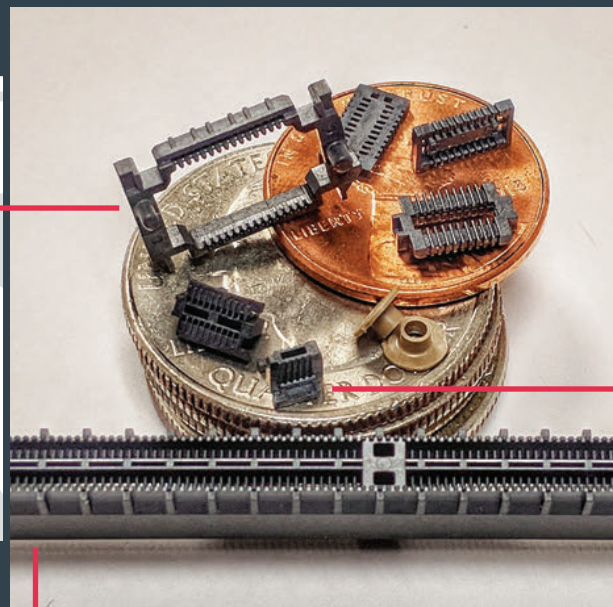
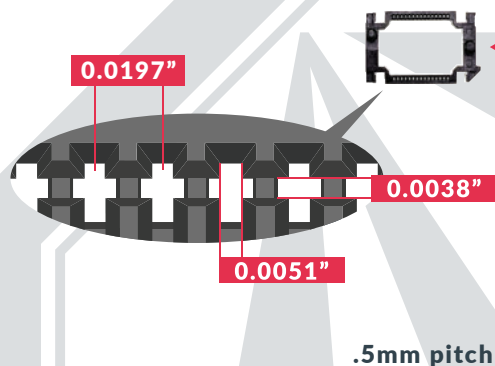
www.matrixtoolinc.com



## ADVANCED MICRO MOLDING

### INTRICATE FEATURES

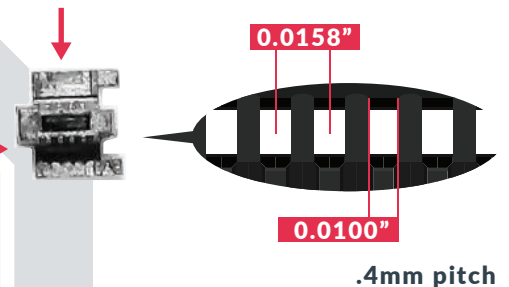
1:1 Scale



### PELLET SIZED MICRO MOLDING

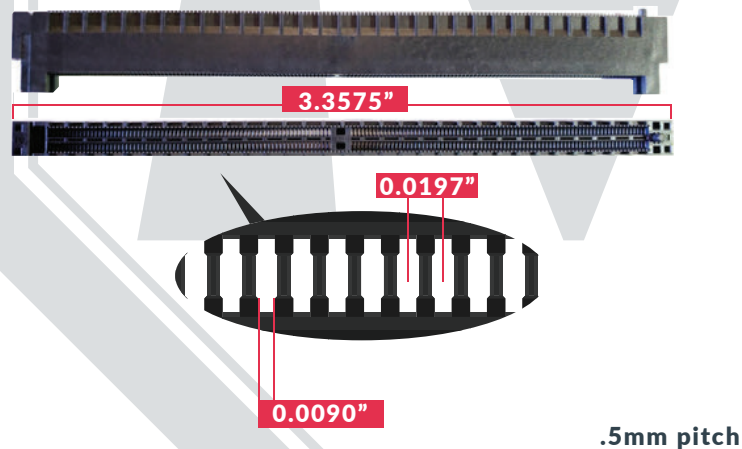
1:1 Scale

- One (1) Plastic Pellet
- One (1) Molded Part



### LONG FLOW LENGTHS

1:1 Scale



### FULL-SERVO ROBOTICS



ISO 9001 CERTIFIED

IATF 16949 CERTIFIED

CONNECT WITH US!



MATRIX TOOL PROVIDES TURNKEY SOLUTIONS  
TO TODAY'S TOUGHEST MARKET CHALLENGES





# MATRIX TOOL INC.

ADVANCED MOLDING AND TOOLING

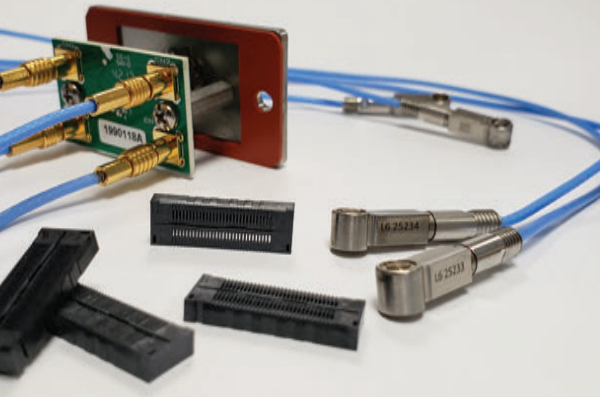
4976 Franklin Road  
P.O. Box 920  
Fairview, PA 16415  
Made in the USA

814 • 474 • 5531

info@matrixtoolinc.com

www.matrixtoolinc.com

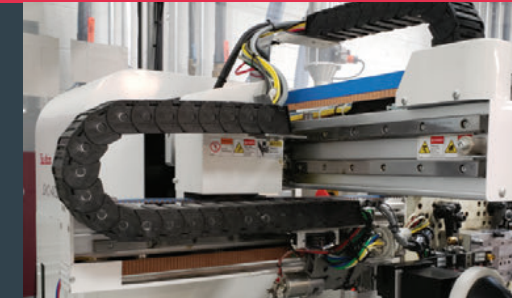
## AUTOMATION & ADVANCED PROCESS CONTROL



### Advanced Process Control & Technical Capabilities

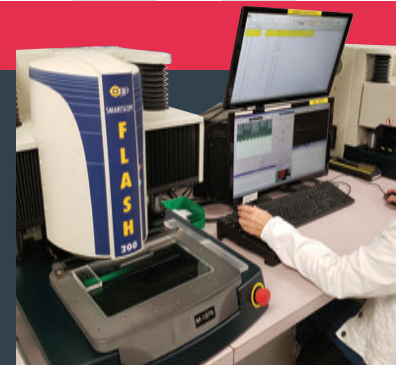
- Master Molder I & II Certified
- RJG & EDM Systems
- 100% Decoupled 2 & 3
- Sodick Recipe Management Software
- Moldflow & FEA Capabilities
- Full Servo-Robots
- EOAT With 3D Printing
- Thermal Cameras
- Design for Manufacturability
- Minimal Material Waste Initiative
- Reverse Engineering
- Integrated ERP & PDM Systems
- Proposed Manufacturing Alternatives With ROI Analysis
- Dedicated In-House Mold Conditioning & Tooling Support
- Optical Inspection Equipment

## QUALITY ASSURANCE

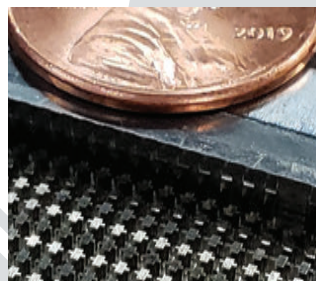
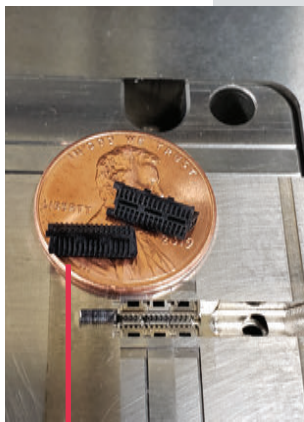


- Capability Studies
- First Article Inspections
- SPC Analysis
- Gage R&R
- CPK and PPK
- PFMEA
- Process Flow
- PPAP

< High Speed 2 Axis Side Entry Robot  
with part inspection capabilities



## ADVANCED MICRO TOOLING



Compact Micro-Tool  
4.5" x 6.3" x 7.8"  
RJG Capable



High Speed  
Precision Mill



High Precision  
Die-Sinker EDM



ISO 9001 CERTIFIED

IATF 16949 CERTIFIED

CONNECT WITH US!



MATRIX TOOL PROVIDES TURNKEY SOLUTIONS  
TO TODAY'S TOUGHEST MARKET CHALLENGES