

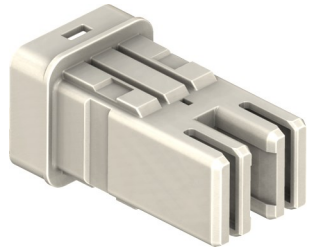
Electric Vehicle High-Voltage Inner Housing Header

Adding Capacity — “The Matrix Way”

Great News! Your new product is a success, and more production capacity is needed right away...

The easiest solution is often to repeat what is working – but when you need capacity should you simply make a duplicate of your current mold? Injection molding is challenging and rarely without risk. Our work days can be manic. However, what better time is there to learn from what you have and apply continuous improvements to your process?

At Matrix, we apply lean manufacturing principles with a focus on the potential at hand. “Can we reduce waste while improving quality?” The answer is usually a resounding “Yes, we can!” We are a creative, highly-experienced, engineering-based precision injection molding products and services provider. We’ve refined our process to meet our customers’ requirements, while simultaneously minimizing the added risk of making improvements and maximizing the rewards for doing so. “The Matrix Way” continues to reward our customers with repeated success for placing their trust in Matrix.



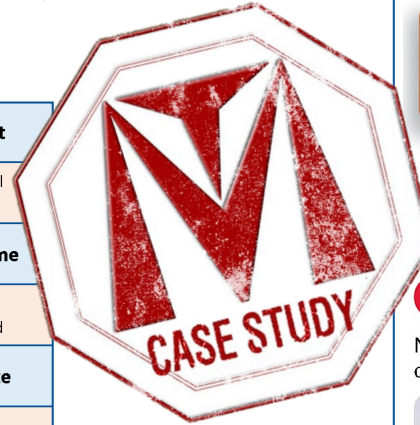
Our customer, a Fortune Top 200 company, developed a **High Voltage E-Motor Connector System** that was adopted by the world’s most popular electric vehicle manufacturers rapidly becoming a great success. Known for our timely, high-quality molds with minimal need for dimensional conditioning, our customer approached Matrix to quickly add the capacity needed in this high-visibility market segment.

The request was for us to do more of the same – to duplicate the manufacturing approach proven to work well enough by the first mold. We certainly could, but as is often the case, we also offered an alternative solution. Our track record of success gave our customer the confidence to support Matrix’s creative, yet fundamentally sound new approach.

What were the results of applying “The Matrix Way” to this high-visibility EV application?

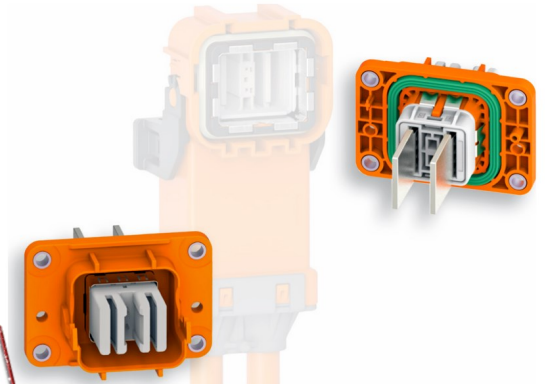
With continuous improvements made from start to finish, we helped to rapidly add the production capacity needed — not only through the addition of our advanced new tooling, but also by applying our expertise to develop a much faster cycling mold with more up time — all while providing our customer with capital and production cost savings as well!

▲	Faster to Market
▶ Rapid delivery through approval provides needed capacity quickly	
45%	Reduced Cycle Time
▶ Provides nearly three cavities of production from a 2-cavity mold	
12%	Reduced Shot Size
▶ With zero regrind allowed, this equates to direct material cost savings	
▼	Reduced Variation
▶ Improved performance with less concern from molding through end use	
▼	Reduced Downtime
▶ Mold designed to have fewer failures and to be easier to maintain	
▼	Reduced Scrap
▶ Implemented process improvements to existing advanced molding process	
▲	Additional Improvements
▶ Improved layout, alignment and cooling, and reduced mold size	



**“AT MATRIX,
WE
CHALLENGE
INDUSTRY
PARADIGMS
TO
ENGINEER
YOUR
SUCCESS”**

www.matrixtoolinc.com



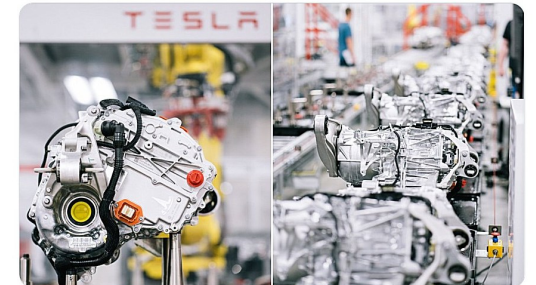
This image and the product image on the far left have been reprinted and used with the permission of TE Connectivity.

Tweet



Tesla
@Tesla

Newly upgraded Model S and X drive units rolling down the production line at Gigafactory 1



932 Retweets 45 Quote Tweets 10.4K Likes



Contact Us

Tom Moyak
Business & Engineering Development
Matrix Tool, Inc.
(814) 474-5531
info@matrixtoolinc.com